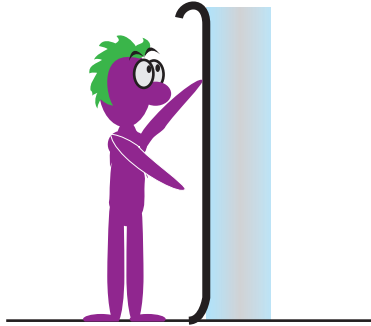
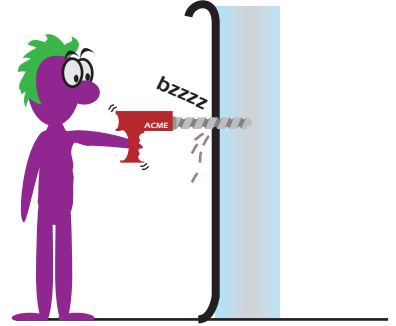


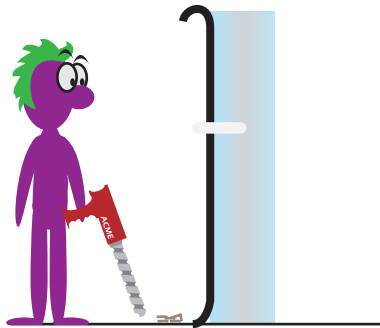
Say you have a thick glass wall.



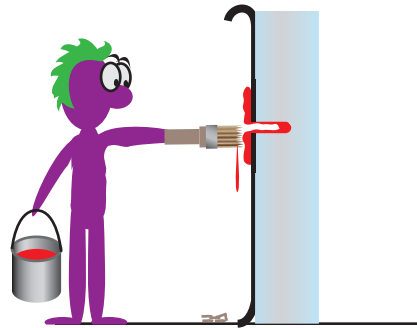
You line one side with thick wallpaper.



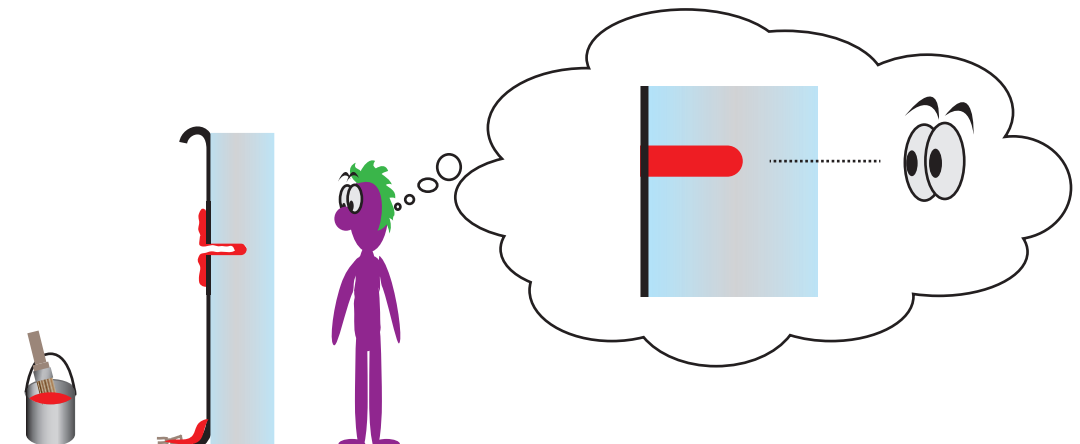
You then drill a hole, through the wallpaper, deep into the glass.



So you now have a deep hole in the wall.



You now paint the interior surface of the hole with some red paint. You make a mess and get it all over the wallpaper, but...



When you look at the glass wall from the other side, all your eye can see is a 3D shape deep in the glass (in this case, it'd look like a red cylinder rising up out of the wallpaper). You can't see the over-paint mess, because it's on the other side of the wallpaper!